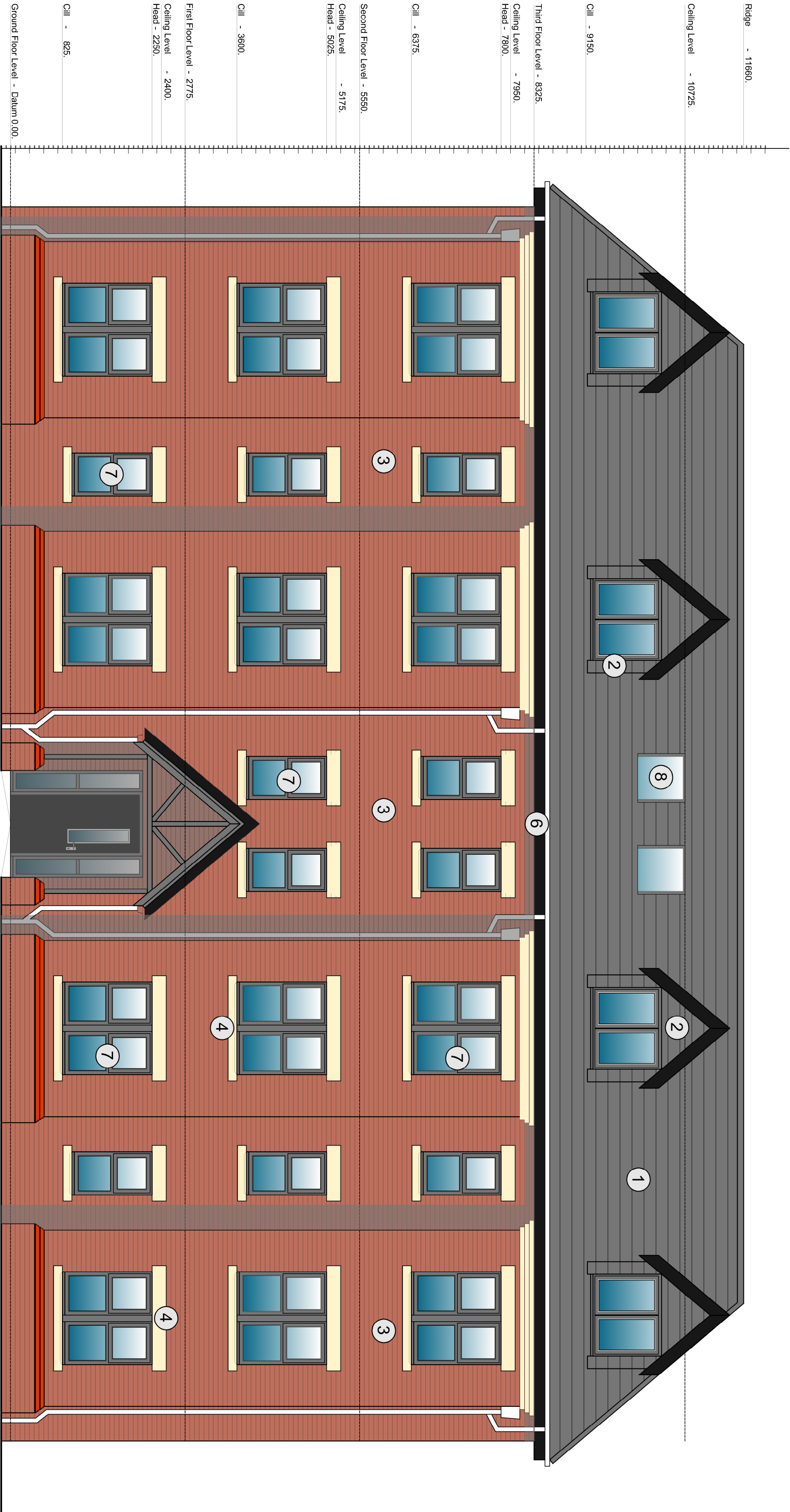


Elevations

Former Charlotte House  
Albert Road, Hyde



**Materials Legend**

- 1 Marley Birkdale fibre cement roof tile
- 2 Marley Birkdale cladding
- 3 Northcot Multi Red Rustic brick
- 4 Artstone heads and cills
- 5 Porcelain panels
- 6 UPVC fascias and soffits. Colour Grey
- 7 UPVC windows. Colour Grey
- 8 Velux roof light
- 9 Aluminium framed glazing / reflective panels

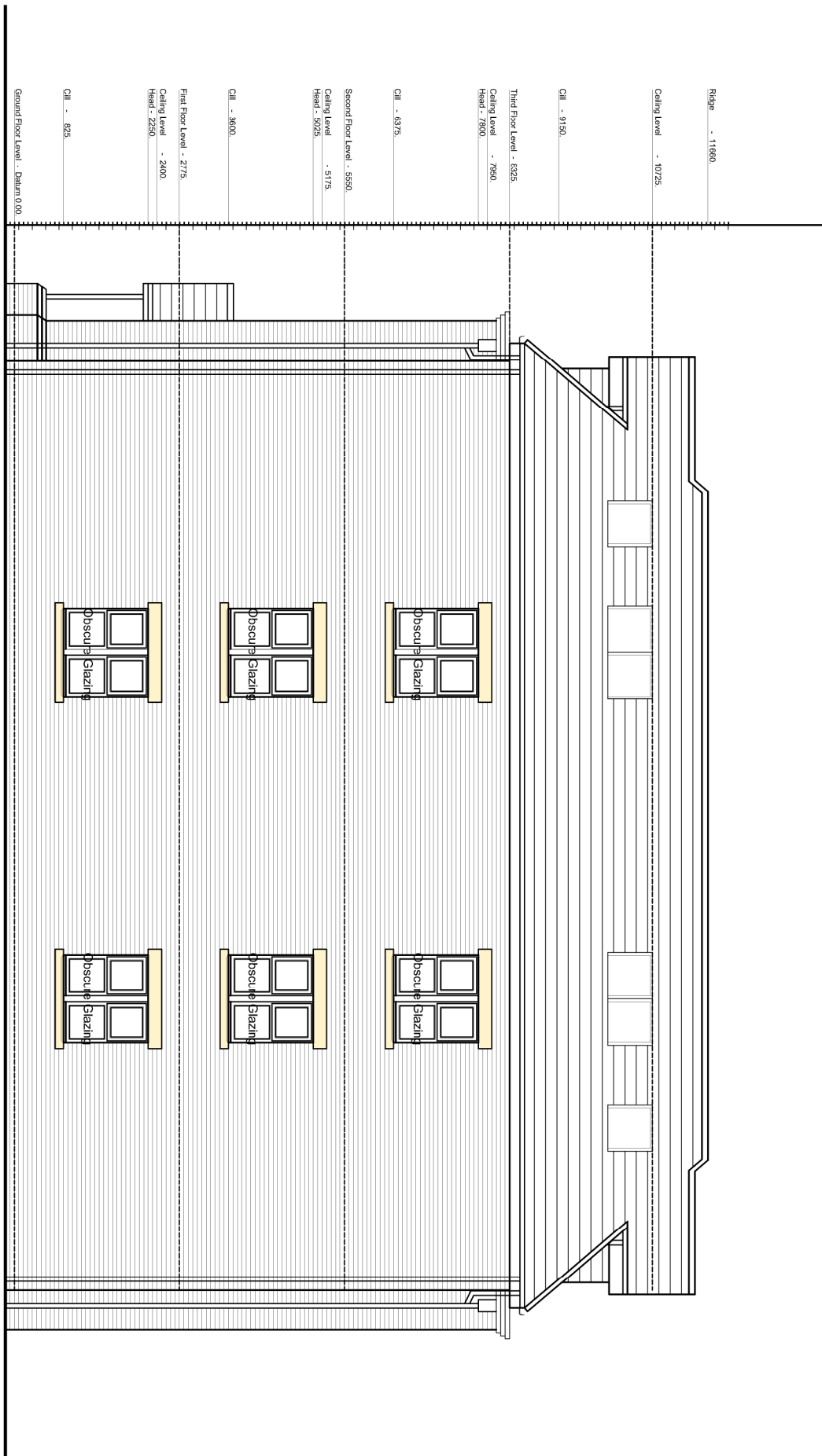
NB All materials/colours to be approved by LA

Obscure glazing as marked on the elevations

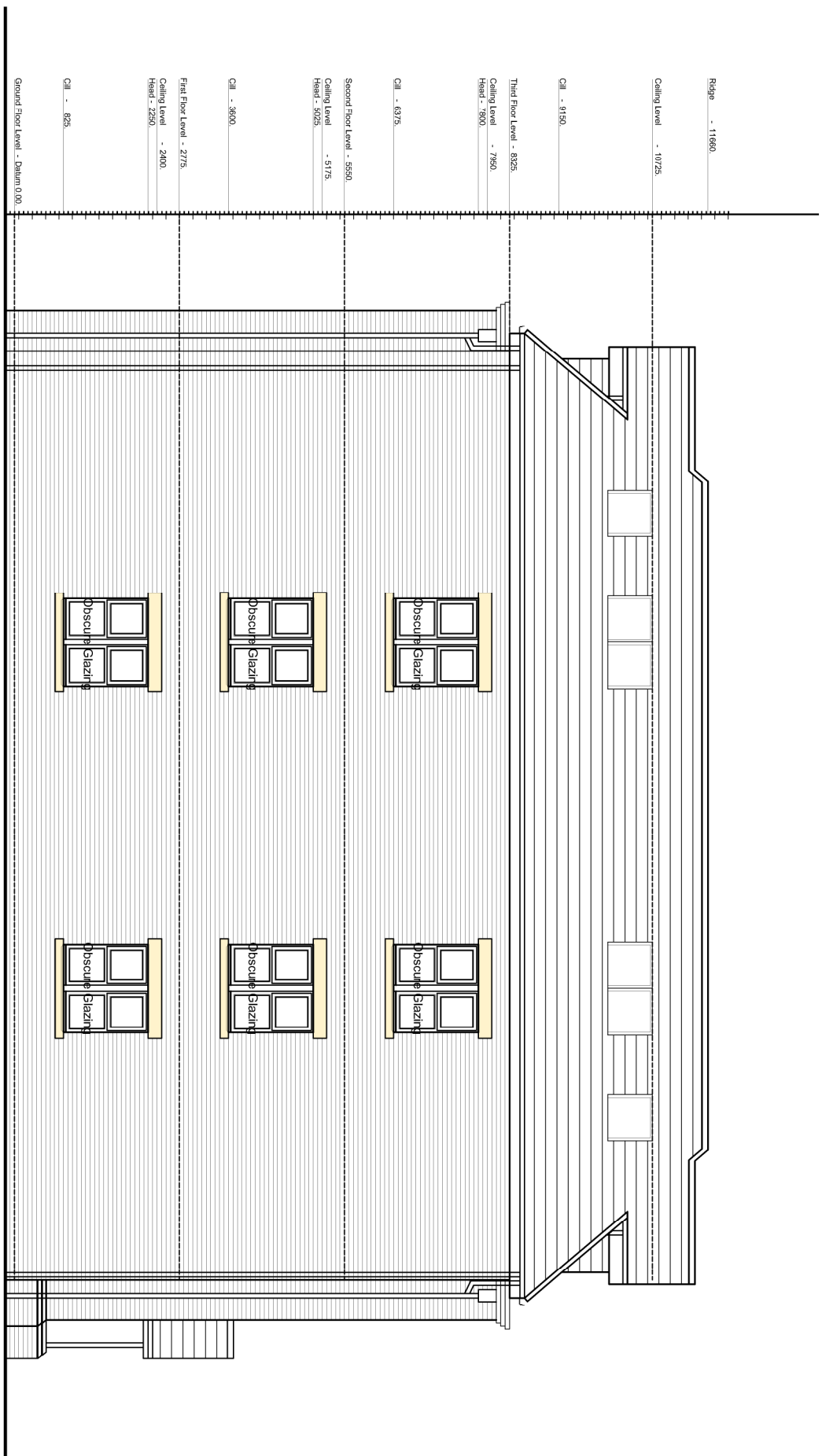
Front Elevation  
Scale 1:50



Rear Elevation  
Scale 1:100



Gable Elevation  
Scale 1:100



Gable Elevation  
Scale 1:100

Revision	Date	Details
A	June 19	Amendments to suit Johnnie Johnson requirements - front entrance increased
B	July 19	Amendments to suit Johnnie Johnson requirements - dormers increased slightly. material changed to fair stoneware area.
C	July 19	Amendments to suit Catherine comments - window details and recessed rear entrance area.
D	July 19	Amendments to suit Johnnie Johnson comments - additional roof light to top floor living areas.

**nicol thomas**  
architects project managers construction cost consultants  
Registered in England and Wales Reg No. 2146639  
Quality Assured to BS EN ISO 9001:1994 Certificate Number GB 4723  
Horseshoe House Blackshaw Lane Heydaly Rotton OL2 6NS  
t:01706 290088 f:01706 290099 e:edham@nicolthomas.com  
Also at Birmingham (Registered office)  
Do not scale from this drawing. All dimensions must be checked and verified before preparing production drawings or commencing works. This drawing and its design is the copyright of Nicol Thomas Ltd and may not be reproduced in any form whatsoever without their prior express written consent.

Client:	Johnnie Johnson Housing Association
Job:	Former Charlotte House, Hyde
Drawing title:	Proposed Elevations
Drawing Number:	M4570 (PL) 06
Scale:	1:50 / 1:100 @ A1
Date:	May 19
Drawn by/ checked by:	RV

nicol thomas